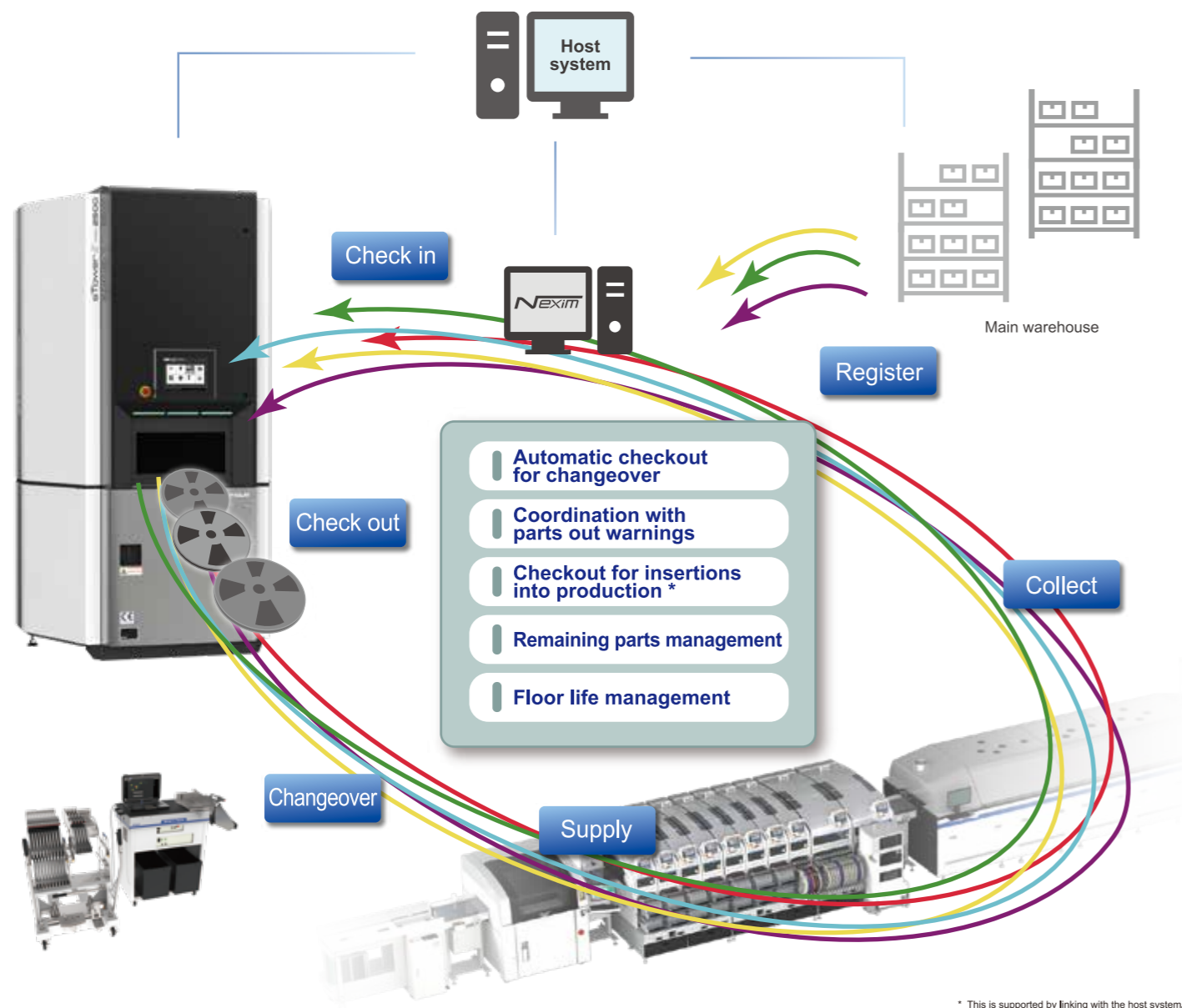


Smart logistics

Smart logistics is achieved by linking the automated part warehouse sTower II and the production system. Target parts are automatically checked out at the appropriate timing based on the production plan. Information that a parts out warning has been issued is acquired from the production line, and checkout work is facilitated. This minimizes line downtime caused by mistakes or delays when picking. In addition, the remaining quantity of parts to be collected and checked back in is also managed by the system. This makes traditionally troublesome part management easier.



Enhanced part management

sTower III 3000
2500
- 2200



* This is supported by linking with the host system.

Specifications		3000	2500	2200
Reel quantity ^{*1}		940 reels	782 reels	624 reels
	Using SmartCarriers	2,300 reels	1,900 reels	1,500 reels
Reel size		7 to 15 inch / 4 to 72 mm ²		
Machine size (L x W x H)		1,474 x 1,643 x 2,991 mm	1,474 x 1,643 x 2,597 mm	1,474 x 1,643 x 2,203 mm
Weight		800 kg	750 kg	700 kg
Power supply		Single phase AC200 to 230 V ±10% (50/60 Hz)		
Option	SmartCarrier	Supports batch management of JEDEC tray parts, parts supplied in bags and multiple parts 7 inch type: 180 x 180 mm, height 45 mm; 13 inch type: 340 x 340 mm, height 30.5 to 77 mm; 15 inch type: 390 x 390 mm, height 30.5 to 77 mm		
	Humidity control	Supports IPC / JEDEC standards, Control humidity levels to 5% (RH) or less.		

^{*1} When storing 7 inch 8 mm wide reels.
^{*2} 4 mm and 72 mm wide reels are stored by using SmartCarriers.

FUJI CORPORATION

19 Chausuyama, Yamamachi, Chiryu, Aichi 472-8686 Japan
Tel: +81 566 81 2110
Fax: +81 566 83 1140

- The contents of this catalog are subject to change without notice due to constant product development.
- The information in this catalog is current as of December, 2019.
© 2019 FUJI CORPORATION. All Rights Reserved.



It is possible to remove the need for management work by linking with the integrated production system, Nexim.

This link helps reduce the time for picking significantly and also contributes to eliminating picking mistakes because the applicable parts are automatically checked out at the necessary timing.

sTower II provides the ideal part management system.

High storage ability

Handles a wide range of parts



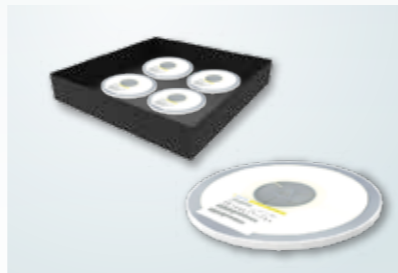
Storage and checkout of parts is possible for up to 5 kg, regardless of the reel size.

High storage capability



Store multiple reels together to increase the storage count by using smart carriers. Tray parts and packaged parts can be also stored.

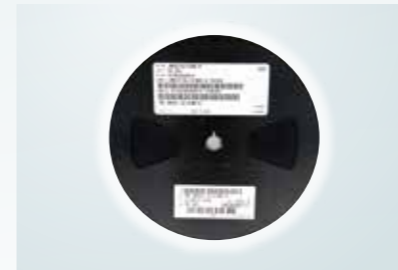
Flexible management by unit



Manage by grouping parts together using smart carriers, manage by individual reels, or manage using any combination of these methods for storage.

Easy management

No need to read barcodes



Stable automatic reading of 1D and 2D codes is possible regardless of their positioning, through the use of a wide view camera.

Supporting checkout for insertions into production



Even if the parts used for the next production are continuously being checked out, parts that are suddenly required can be checked out when they are inserted into production. Requests for parts from production lines are supported flexibly.

Humidity control



The dry component function is equipped and parts sensitive to humidity can be managed appropriately. Increases in the humidity during checking in/out is kept to a minimum by the double-door configuration.

Minimizing the installation area



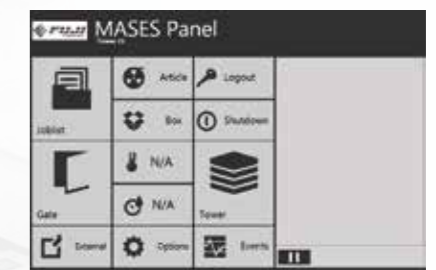
The installation space is kept to a minimum even when needing to install several units thanks to the configuration of Fuji's original part storage and check in, check out mechanisms.

Linking multiple units



Multiple towers can be linked to be used as one unit, allowing for easy system inventory management without needing to worry about which tower parts are stored in.

Intuitive interface



Easy operation using a large touchscreen. Security is ensured by using a password.

Three improvements
Management
Picking work
Mistake prevention

