

Reel Loader	
Supported tape types	8 mm paper and embossed tape
Supported tape thickness	Paper: 1.2 mm or less Embossed: 2 mm or less
Supported feeders	W08b, W08c, W08f
Cycle time	10 seconds
Unit size & weight	L320 x W740 x H1200 mm 150 kg
Power supply	AC 100 to 240 V
Air supply	0.35 MPa to 0.5 MPa

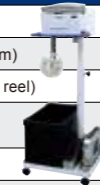


Option units (automatic cutting, barcode scanning)	
Supported tape types	8 mm tape (paper and embossed)
Cycle time	10 seconds (operation time)

VPDplus&ASG	
Operating environment	Fuji Flexa V3.0 or later VPDplus V5.0 or later + option license
Camera Stand size	L305 x W546 x H772 mm



Auto Splicing Unit	
Supported tape types	8 mm paper tape
Part size	0402 (01005") to 3216 (1206") (3.2 x 2.5 mm)
Splicing tape	Fuji splicing tape (reel type, 1200 pieces per reel)
Tape connection position accuracy	±0.2 mm
Cycle time	5.6 sec
Unit size & weight	L450 x W450 x H1012 (±100) mm 17kg * Without the battery
Power supply	Rechargeable battery (Input voltage: AC 100 to 240V)



Smart Nozzle Cleaner	
Stations	NA74A (H24G, H24) ND36A, ND32C, NS0ZA (V12, H12, H08)
Applicable nozzles	H24S, H24G, H24, V12, H12HS(Q), H08(Q)
Applicable nozzle diameters	φ0.2 to φ3.7 standard nozzles
Cleaning fluid	Ultra - pure water
Cleaning time	App. 24 min. (40 nozzles / transfer + cleaning + inspection)
Unit size & weight	L455 x W1000 x H1420 mm 230 kg
Power supply	AC 200 V
Air supply	0.35 to 0.5 MPa



Auto Head cleaner	
Applicable heads	H24S, H24G, H24, V12, H12HS(Q), H12, H08(Q), H08M(Q), H04SF, H04S, H04
Cleaning period	Air mode: Every month (Every 700 hours) Oil mode: Every three months (every 2100 hours)
Cleaning time	Air mode: 8 minutes Oil mode: 21 minutes * When cleaning 12 nozzle head
Cleaning fluid	Fluorinated grease
Unit size & weight	L350 x W650 x H1410 mm 110 kg
Power supply	AC 200 V to 230 V
Air supply	0.4 MPa



Auto Feeder Maintenance Unit	
Supported feeder	W08, W08b / c, W08f
Capacity for concurrent maintenance	1 feeder
Cycle time	4 min (including vision processing time)
Unit size & weight	L360 x W820 x H1190 mm 120 kg
Power supply	AC 200 V to 240 V
Air supply	0.5 MPa



Smart setup station	
Applicable machines	NXT III, NXT IIIc, NXT II, NXT IIc, AIMEX series
Supported feeder	W04 to W104, Auto Loading Feeder
Applicable feeder pallets ^{*1}	DP20, DP45, DP65 * Set on PCUs, PSUs, or MFUs
Unit size & weight	L845 x W430 x H900 70kg
Power supply	AC 100 V



*1 It is necessary for the feeder pallet to support the Smart setup station.

Automation and Labor Saving Tools

Units which allow anyone to easily and quickly do the tasks performed by operators every day



Fuji automation and labor saving solutions

Reel Loader

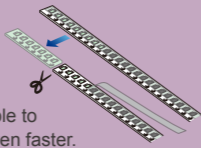
Automates setting tape reels on feeders to greatly reduce preparation time

- ▶ Automatic loading just by setting the reel
- ▶ Eliminates part loading mistakes by automating part verification (option unit when using Fujitrax)



Option units

Automatic cutting unit
*Under development
Automatically performs reel tape processing. It is possible to perform reel changeover even faster.



Barcode scanning unit
By reading the reel ID with the scanner attached to the unit, verification is performed automatically so there are no problems with wrong IDs.



VPDplus and Auto Shape Generator (ASG)

Create reliable part data in just 3 steps

- ▶ Automatically creates part data based on imported images
- ▶ Vision processing tests can be performed offline with the same conditions as the machine



Auto Splicing Unit

Easy reliable splicing by anyone

- ▶ Just insert the tapes into the unit to splice without any empty cavities
- ▶ Balance work time and improve quality by automating work
- ▶ Eradicates small stoppages due to splicing defects



Work time

48 seconds reduced to 10 seconds



Set a feeder and insert the tape

Tape is automatically taken up and set

Load directly to the machine

Materials preparation

Reduce preparation time with timely guidance and accurate work

Reduce checking and prevent loading mistakes by issuing notices about which parts are required, their location, and where they are to be loaded.

(Fujitrax Verifier option)



Part supply

No need to monitor remaining part quantities manually

Prevents machine stops due to parts outs by issuing guidance for slots nearly out of parts.

(Fujitrax Verifier option)



Work time

45 seconds reduced to 5 seconds



Set tapes

Auto splicing

Complete

Smart setup station



Links with Nexim and supports offline changeover

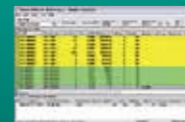
- ▶ Batch reel rewinding
- ▶ Efficient part verification and feeder setup on feeder pallets
- ▶ Guidance for where to set feeder pallets

Eliminate all delays by linking tools to the system

Maintenance

Maintain highly efficient production with predictive maintenance and ideal maintenance

- ▶ Manages heads, nozzles, and feeders with individual IDs
- ▶ Gives warnings for units requiring maintenance based on various conditions (error rate, error count)
- ▶ Units that have not been maintained are not allowed to be used in production

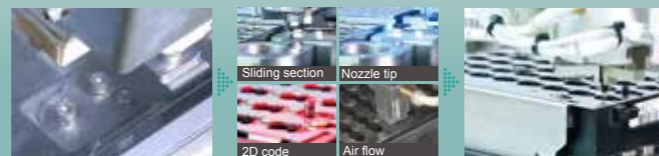


(Fujitrax Verifier option)

Smart Nozzle Cleaner

Automates nozzle cleaning, inspection, and setting

- ▶ Inspection items
2D code reading, air flow, nozzle sliding movement, nozzle tip damage
- ▶ Defective nozzles are sorted by problem cause and ejected
- ▶ Nozzles can be automatically set from the storage section of the unit based on the next production program
- ▶ Automatically registers in the system when nozzles are maintained



Cleaning

Inspection

Sets nozzles for next production



Auto Head Cleaner

Easy maintenance that doesn't require training

- ▶ Completely automates cleaning, oil application, and operation checks for air channels inside heads
- ▶ Automatically recognizes the ID of the set head
- ▶ Automatically registers inspection results and maintenance history to the system

Cleaning time for 12 nozzles

41 minutes reduced to 8 minutes



Auto Feeder Maintenance Unit

Maintains and inspects feeders in just 4 minutes

- ▶ Removes old grease and other foreign matter from gears and then applies new grease
- ▶ After cleaning and lubrication, automatically measures the indexing pitch
- ▶ Automatically reads the ID of feeders when they are set and registers the maintenance history in the system



Automatic reading of the ID of the feeder



Cleaning and lubrication



Indexing position inspection