

# PROwave

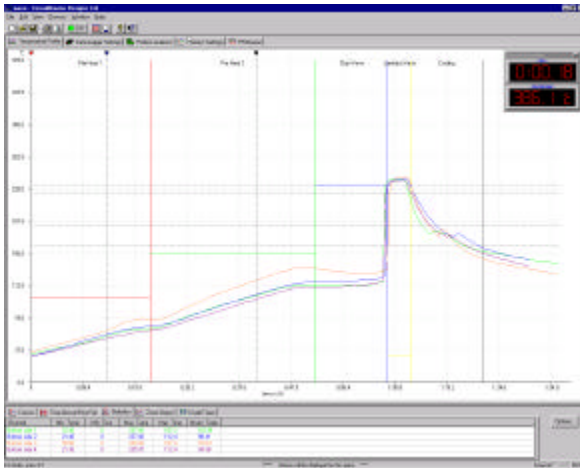
## Wave Soldering Process Analyser

### Improve your wave soldering process

*PROwave* working in conjunction with the *PROfiler* datalogger monitors and reports all the critical parameters of your wave soldering process. Simply send *PROwave* through your wave soldering machine and accurate measurements of key process parameters are recorded for download to a PC.

*PROwave* allows you to quickly and efficiently perform quality and diagnostic checks to: -

- Improve and monitor your process quality
- Reduce rework costs
- Reduce scrap
- Ease the provision of ISO documentation



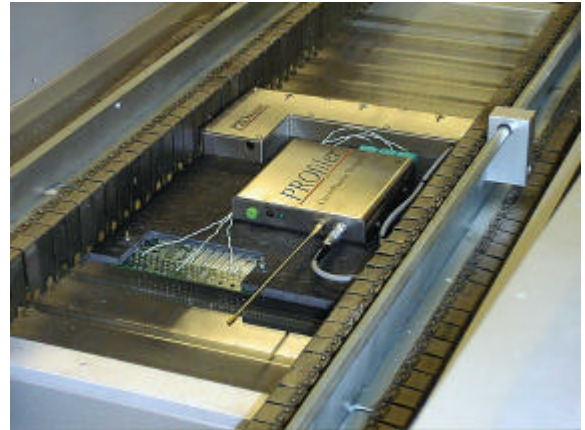
Comprehensive, easy to use Windows® 95/98/NT4 compatible data analysis tools

### View your board's contact area on screen !

For the first time the *PROwave* system allows you to easily view the contact area of the solder wave on screen.

The measurements taken during the run are used to construct a 2D contact area map, which is invaluable in fine tuning your machines settings.

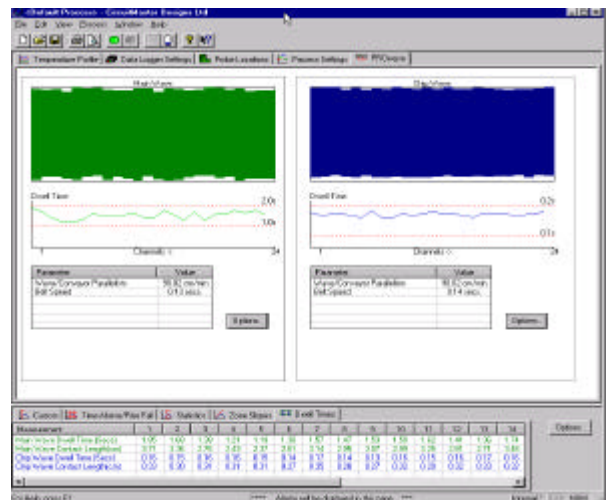
Since the wave is checked throughout its width, it is possible to monitor dwell times across the whole PCB allowing detection of voiding or machine parameter fluctuations.



Real-time temperature profiling performed by the *PROfiler* temperature datalogger

### Measure key process parameters

- Pre-heat / Component Temperatures
- Accurate Solder Pot Temperature
- Conveyor Speed
- Dwell Times ( Across the whole wave )
- Wave to Conveyor Parallelism
- Contact Length
- Temperature slopes and statistics
- Solder Solidification Time
- Automatic chip wave detection
- On screen view of wave contact area



*PROwave* checks the integrity of your wave over its **entire** width.

# *PRO*wave

## Wave Soldering Process Analyser

### The Complete Solution

- Send the *PRO*wave pallet through your wave soldering process.
- Monitor up to six channels of temperature profile information in real-time via the *PRO*filer datalogger and its RF telemetry system.
- View a 2 dimensional PCB to solder wave contact area map on screen.
- View wave to conveyor parallelism, conveyor speed and dwell times across the whole width of the wave.
- Analyse, save and print a complete record of your process with the PC software. (The *PRO*wave software forms an integral part of the *PRO*filer user interface).

### Technical Specification

<i>PRO</i> filer Datalogger		<i>PRO</i> wave Pallet	
<b>Accuracy</b>	+/- 1°C (+/- 1.8°F)	<b>Channels</b>	24-48 dependant on width
<b>Resolution</b>	0.02°C (0.036°F )	<b>Sampling</b>	10mS
<b>Channels</b>	6 Type K	<b>Storage</b>	>10,000 events
<b>Sampling</b>	100mS-10mins	<b>Size (mm)</b>	235-464(W)x305(L)x 28(H)
<b>Storage</b>	65000 points	<b>(Inches)</b>	9.25-18.3(W)x12(L)x1.1(H)
<b>Power</b>	Fully Rechargeable (2hrs)		

Standard Equipment	Optional Equipment
◆ Six Channel RF <i>PRO</i> filer datalogger	◆ Custom width/Standard extender modules
◆ Six type K thermocouples	◆ Reflow barrier
◆ PC analysis software & download lead	◆ Reflow Edge feed carrier
◆ Batteries & charger unit	
◆ <i>PRO</i> wave wave soldering pallet	

### For sales & distribution information contact

CircuitMaster Designs Ltd  
 Kingsway West Business Park  
 Moss Bridge Road, Rochdale  
 Lancashire, United Kingdom  
 OL16 5LW  
[prowave@circuitmaster.co.uk](mailto:prowave@circuitmaster.co.uk)  
<http://www.circuitmaster.co.uk>

